

HIGHLITE, INC.

Patent #5564229

RETAIL PRICING GUIDE

CUSTOM & STOCK
SPECIALTY SHAPE
WINDOW COVERINGS

PROUDLY MANUFACTURED IN THE U.S.A.



THE
ARCH GUYS
DOING IT RIGHT
SINCE 1996

2021

FEATURING HIGHLITETM
WITH THE PATENTED
ONE-TOUCH
OPEN & CLOSE
MECHANISM

QUALITY
ON TIME
EVERY TIME

INTRODUCING THE EASY ARCH IN 14 STOCK SIZES

The EASY ARCH
- Completely Flush Mount
- Easy to order
- Easy to install
- Just Plain EASY!
Fits arches from 2 Foot to 6 Foot



www.TheArchGuys.com

HighLite, Inc. 4320 Action Drive Mesquite, TX 75150 214-741-4116 800-830-5627 Fax 214-741-4580

OPERABLE CUSTOM UNITS:

Featuring the Patented Easy Open/Close Mechanism on Arches, Eyebrows, Quarter Arches & Split Units

Quarter and Split Eyebrows (Shape 4 & 5) MUST be reachable by hand to operate.

Eyebrows with Legs (Shape 2): Minimum Center Height is 7½ inches and 1" of LEG Height for every 12" of Width is REQUIRED

Note: If Height Exceeds 1/2 the Width, a 20% Upcharge applies.



ONLY HIGHLITE ARCHES FEATURE THE UNIQUE EASY OPEN & CLOSE PATENTED MECHANISM SHOWN HERE.



Width	24"	27"	30"	33"	36"	39"	42"	45"	48"	51"	54"	57"	60"	63"	66"	69"	72"	75"
Painted	\$261	\$294	\$326	\$359	\$392	\$424	\$457	\$490	\$522	\$555	\$588	\$620	\$653	\$685	\$718	\$751	\$783	\$816
Stained	\$405	\$456	\$506	\$557	\$608	\$658	\$709	\$760	\$810	\$861	\$912	\$962	\$1013	\$1063	\$1114	\$1165	\$1215	\$1266
Deluxe	\$329	\$370	\$411	\$452	\$493	\$534	\$575	\$617	\$658	\$699	\$740	\$781	\$822	\$863	\$904	\$945	\$986	\$1028
Minimum S&H Charge Applies										CALL FOR QUOTE								

SPECIALTY SHAPED UNITS

Circles and Octagons are restricted to 46" wide.

A 10% Upcharge applies on Ovals.

OPERABLE

Width	24"	27"	30"	33"	36"	39"	42"	46"
Painted	\$397	\$447	\$497	\$546	\$596	\$645	\$695	\$761
Stained	\$558	\$628	\$698	\$767	\$837	\$907	\$977	\$1070
Deluxe	\$464	\$522	\$581	\$639	\$697	\$755	\$813	\$890
Minimum S&H Charge Applies				CALL FOR QUOTE				



A 10% Upcharge applies on Ovals.

NON-OPERABLE

Width	24"	27"	30"	33"	36"	39"	42"	46"
Painted	\$278	\$313	\$348	\$382	\$417	\$452	\$487	\$533
Stained	\$401	\$451	\$502	\$552	\$602	\$652	\$702	\$769
Deluxe	\$348	\$392	\$435	\$479	\$522	\$566	\$609	\$667
Minimum S&H Charge Applies				CALL FOR QUOTE				

ADD SOLAR SCREEN OR CLOSED BACK

Width	24"	27"	30"	33"	36"	39"	42"	46"
Painted	\$306	\$345	\$383	\$421	\$460	\$498	\$536	\$587
Stained	\$432	\$486	\$540	\$594	\$648	\$702	\$756	\$828
Deluxe	\$381	\$428	\$476	\$523	\$571	\$619	\$666	\$730
Minimum S&H Charge Applies				CALL FOR QUOTE				

A 10% Upcharge applies on Ovals.

THE EASY ARCH Patent Pending

Product Ships in 2 days in White and 5 days in Other Colors

The EASY ARCH
 - Completely Flush Mount
 - Easy to order
 - Easy to install
 - Just Plain EASY!
 Fits arches from 2 Foot to 6 Foot



NEW!!

The Easy Arch comes in 14 sizes. See available colors on page 6. See website for installation instructions.

#	FITS WIDTHS			TIP TO TIP	WHITE	OTHER	MINIMUM S&H CHARGES APPLY
1	23	-	25.5	28 x 15 7/8	\$188	\$220	
2	25.5	-	28.5	31 x 17 3/8	\$211	\$243	
3	28.5	-	32.5	35 x 19 3/8	\$241	\$273	
4	32.5	-	36.5	39 x 21 3/8	\$271	\$303	
5	36.5	-	40.5	43 x 23 3/8	\$301	\$344	
6	40.5	-	44.5	47 x 25 3/8	\$331	\$374	
7	44.5	-	48.5	51 x 27 3/8	\$361	\$404	CALL FOR QUOTE
8	48.5	-	52.5	55 x 29 3/8	\$391	\$434	
9	52.5	-	55.5	58 x 30 7/8	\$414	\$468	
10	55.5	-	59.5	62 x 32 7/8	\$444	\$498	
11	59.5	-	63.5	66 x 34 7/8	\$474	\$528	
12	63.5	-	68.5	71 x 37 3/8	\$512	\$565	
13	68.5	-	73.5	76 x 39 7/8	\$549	\$614	
14	73.5	-	77	80 x 41 7/8	\$579	\$644	

The Easy Arch features a detachable outer ring that covers your mounting holes. You simply screw or nail the arch in place then Velcro the ring over the holes. EASY!



NON-OPERABLE CUSTOM UNITS

Arches, Eyebrows, Quarter Arches & Split Units

Note: If Height Exceeds 1/2 the Width, a 20% Upcharge applies.



120" Split Non-Operable Eyebrow

Width	24"	27"	30"	33"	36"	39"	42"	45"	48"	51"	54"	57"	60"	63"	66"	69"	72"	75"
Painted	\$196	\$221	\$245	\$270	\$294	\$319	\$343	\$368	\$392	\$417	\$441	\$466	\$490	\$515	\$539	\$564	\$588	\$613
Stained	\$312	\$351	\$390	\$429	\$468	\$507	\$546	\$585	\$624	\$663	\$702	\$741	\$780	\$819	\$858	\$897	\$936	\$975
Deluxe	\$299	\$337	\$374	\$412	\$449	\$486	\$524	\$561	\$599	\$636	\$673	\$711	\$748	\$786	\$823	\$860	\$898	\$935
Minimum S&H Charge Applies										CALL FOR QUOTE								

NON OPERABLE WITH CLOSED BACK (ZERO LIGHT)

If your non-operable product is taller than it is wide, base the price on the larger dimension.

This applies to all products.

Note: If Height Exceeds 1/2 the Width, a 20% Upcharge applies.



Closed Back

Width	24"	27"	30"	33"	36"	39"	42"	45"	48"	51"	54"	57"	60"	63"	66"	69"	72"	75"
Painted	\$220	\$248	\$275	\$303	\$330	\$358	\$386	\$413	\$441	\$468	\$496	\$523	\$551	\$578	\$606	\$633	\$661	\$689
Stained	\$312	\$351	\$390	\$429	\$468	\$507	\$546	\$585	\$624	\$663	\$702	\$741	\$780	\$819	\$858	\$897	\$936	\$975
Deluxe	\$298	\$335	\$372	\$409	\$446	\$484	\$521	\$558	\$595	\$632	\$670	\$707	\$744	\$781	\$818	\$856	\$893	\$930
Minimum S&H Charge Applies										CALL FOR QUOTE								

The Louverlite



Shown: Non Op with Deluxe Frame over Comfortex DZ Shutter



Shown: Non Op Standard Frame over Blind with 3" Bottom Trim



Shown: Non Op with Deluxe Frame over Door (standalone)

Width	24"	27"	30"	33"	36"	39"	42"	45"	48"	51"	54"	57"	60"	63"	66"	69"	72"	75"
Painted	\$210	\$236	\$263	\$289	\$315	\$341	\$368	\$394	\$420	\$446	\$473	\$499	\$525	\$551	\$578	\$604	\$630	\$656
Stained	\$326	\$366	\$407	\$448	\$489	\$529	\$570	\$611	\$651	\$622	\$733	\$773	\$814	\$855	\$896	\$936	\$977	\$1018
Deluxe	\$284	\$319	\$355	\$390	\$426	\$461	\$496	\$532	\$567	\$603	\$638	\$674	\$709	\$745	\$780	\$816	\$851	\$887
Minimum S&H Charge Applies										CALL FOR QUOTE								

SOLID EYEBROWS

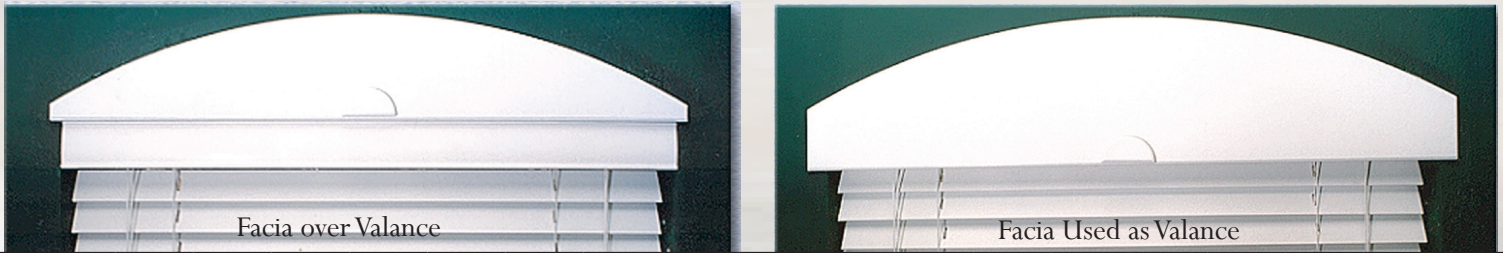
Minimum Center Height 6"
Appliques can be added to Solid
Eyebrows; Solid Eyebrows also
look great above doorways!



Width	24"	27"	30"	33"	36"	39"	42"	45"	48"	51"	54"	57"	60"	63"	66"	69"	72"	75"
Painted	\$158	\$178	\$198	\$217	\$237	\$257	\$277	\$297	\$316	\$336	\$356	\$376	\$395	\$415	\$435	\$455	\$474	\$494
Stained	\$252	\$284	\$316	\$347	\$379	\$410	\$442	\$473	\$505	\$537	\$568	\$600	\$631	\$663	\$694	\$726	\$757	\$789
Deluxe	\$239	\$268	\$298	\$328	\$358	\$388	\$417	\$447	\$477	\$507	\$537	\$567	\$596	\$626	\$656	\$686	\$716	\$746
Minimum S&H Charge Applies										CALL FOR QUOTE								

FACIAS

Center Height cannot exceed 17"; Maximum Leg Height 3" If dimensions exceed these restrictions, please order SOLID Eyebrow



Width	24"	27"	30"	33"	36"	39"	42"	45"	48"	51"	54"	57"	60"	63"	66"	69"	72"	75"
Painted	\$110	\$123	\$137	\$151	\$165	\$178	\$192	\$206	\$219	\$233	\$247	\$260	\$274	\$288	\$302	\$315	\$329	\$343
Stained	\$173	\$194	\$216	\$238	\$259	\$281	\$302	\$324	\$346	\$367	\$389	\$410	\$432	\$454	\$475	\$497	\$518	\$540
Deluxe	\$155	\$174	\$194	\$213	\$232	\$252	\$271	\$290	\$310	\$329	\$348	\$368	\$387	\$406	\$426	\$445	\$464	\$484
Minimum S&H Charge Applies										CALL FOR QUOTE								

APPLIQUES:

Appliques can be added to Solid Eyebrows OR Facias. Cost will be added to product.

Applique "A" \$75 17½" x 2½"



AVAILABLE COLORS

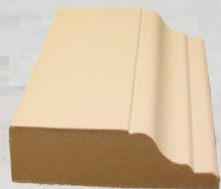
Highlite maintains color decks to offer complementary colors for a large number of fabricators including Graber, Hunter-Douglas, Timber Blinds, Royal Windows, Budget Blinds and many others. In the event that we do not have a sample of the color requested, it will be up to you to supply us a sample. If the color is in the white or off white family of colors, there is no upcharge for a painted product. If the color requested is not in the white or off white family of colors, a \$45 upcharge will be applied to the listed price in our pricing guide. This upcharge is for the entire order and not a per unit charge. This upcharge also applies if a specific paint brand is requested, such as Sherwin-Williams, Benjamin Moore, etc.

DELUXE FRAME UNITS

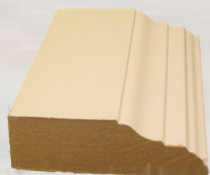
Deluxe Frames are designed to complement various shutter profiles. Note that all profiles are not available in all shapes.

These frames are available in PAINT only. When ordering Deluxe products use the Deluxe Order Form.

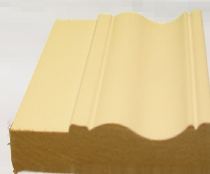
Always supply tip-to-tip dimensions in addition to the window opening dimensions when ordering any Highlite product over shutters.



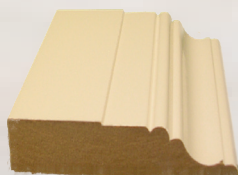
Profile 1
Complements
VinylBilt & Palm Beach Shutters
Available: ALL SHAPES



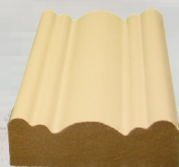
Profile 2
Complements
Coastal Shutters
Available: ALL SHAPES



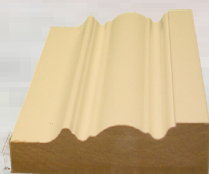
Profile 3
Complements
Comfortex Deluxe Z Frame
Available: SHAPE 1 & 2



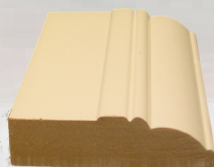
Profile 4
Complements
Norman Small Deco
Available: SHAPE 1 & 2



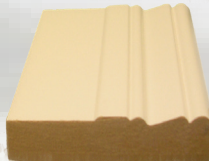
Profile 5
Complements
Norman 3" Crown Z
Available: SHAPE 1 & 2



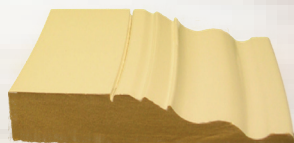
Profile 6
Complements
C322 Casing
Available: SHAPE 1 & 2



Profile 7
Complements
Norman Camber Deco
Available: SHAPE 1 & 2



Profile 8
Complements
Norman Bel Air Z
Available: SHAPE 1 & 2



Profile 9
Complements
Norman 3" Ridge Deco
Available: SHAPE 1 & 2



Profile 10
Complements
Norman Vintage L Frame
Available: SHAPE 1 & 2



Profile 1 - Deluxe Operable Eyebrow, Complements VinylBilt & Palm Beach Shutters



Profile 2 - Deluxe Solid Eyebrow with Applique



Profile 1 - Deluxe Facia with Applique over VinylBilt Shutter

See Page 3 for applique pricing.

Note:

When ordering a shutter to be combined with a HighLite Arch, please allow height equal to $\frac{1}{2}$ the width, whenever possible for a more uniform look.

Profile 4 - Deluxe Operable Arch
over Norman Small Deco



Profile 3 - Deluxe Operable Arch
over Comfortex Deluxe Z



Profile 1 - Deluxe Facia over
Norman Small Deco



AVAILABLE COLORS

HighLite maintains color decks to offer complementary colors for a large number of fabricators including Graber, Hunter-Douglas, Timber Blinds, Royal Windows, Budget Blinds and many others. In the event that we do not have a sample of the color requested, it will be up to you to supply us a sample. If the color is in the white or off white family of colors, there is no upcharge for a painted product. If the color requested is not in the white or off white family of colors, a \$45 upcharge will be applied to the listed price in our pricing guide. This upcharge is for the entire order and not a per unit charge. This upcharge also applies if a specific paint brand is requested, such as Sherwin-Williams, Benjamin Moore, etc.

Stain Policy: First, it is necessary for you to communicate to us what you want your match to be. This can be a sample you send to HighLite, or instructions from you to match a particular color from the listed fabricators. Keep in mind if you are matching a blind, the actual blind you receive may not match yours or our sample deck. Due to this possible variance, we require you to approve a strike-off which will be sent to you within 48 hours of receipt of your color information. Production time on stained product does not begin until we have your color approval in hand.

Faux Stains: These are the most difficult to match due to the fact that they are neither paint nor stain. In the event paint works best, a \$40 custom paint charge applies. If stain works best, use Stain Pricing Grid. Stain Policy also applies.

IMPORTANT NOTE: Current Shipping Rates, Order Forms, Suggested Retail Pricing Guide, Photo Gallery, Installation Instructions, Credit Application and many other tools are always available on our website at:

www.TheArchGuys.com or www.HighLiteInc.com

POLICIES AND IMPORTANT INFORMATION:

All Products listed in this guide (except Stock Arches) are available with either Round or Square Openings.

All pricing information in this guide is for Outside (or Flush) Mount; upcharges apply for Inside Mount. (See below)

Restocking Fee: (Stock Arches Only). A fee equal to actual shipping and handling charges both ways will apply.

Repaint: \$45 per unit plus shipping costs.

Material Used: Our product is fabricated from a high-density fiberboard (primarily Pine). This product gives the look and feel of solid stock. When stain is required, a maple veneer is applied.

Template Free Ordering: When using our standard flush, outside-mount procedure, it is not necessary to supply a template.

Instructions for both ordering and installing are available on our our website.

OOPS Policy: Any order that requires a remake due to customer error will be credited 50% of either the new or original invoice amount, whichever is less. Shipping charges apply. Limited to one per year.

Sample Kit: \$35 Includes an Operable Arch

Late Fees: A \$35 Late Fee per Invoice applies to all payments received after 30 days (Term Accounts).

Shipping: Check our website for up-to-date Shipping Information

www.TheArchGuys.com or www.HighLiteInc.com

INSIDE MOUNT



When ordering Arches or Eyebrows to be **Inside** Mounted, a template is required. On all inside mounts an Inside Mount Kit is suggested. This Kit includes a 1-1/2" x 3/4" Mounting Strip painted to match the arch. The arch is then mounted to the strip using our removable mounting system. Call for details. Retail cost \$15.00 per foot. Inside Mount is substantially more difficult, requires a template and should only be utilized when conditions dictate.

REMOVABLE MOUNTING

Not Available with Deluxe Frames

This system utilizes screws with screw-hole button covers. Allows for easy removal of HighLite. No extra charge!

Original mounting utilizes 2 bottom brackets and 3 pre-drilled finish nails around perimeter.



Proudly Manufactured in
Mesquite, Texas U.S.A.



CUSTOMER SERVICE HOURS

8:00 AM - 4:00 PM CST

MONDAY - THURSDAY

FRIDAY 8:00 - 2:00 PM

1-800-830-5627

(214) 741-4116

(214) 741-4580 Fax